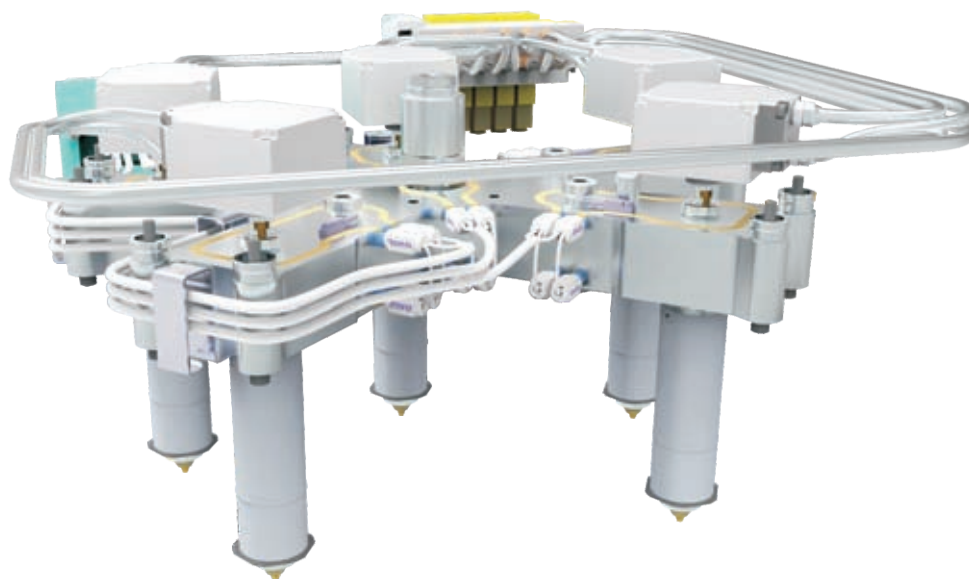


## PRM-T SYSTEM



**PRM-T SYSTEM** is the most convenient and efficient system for the application to save the mold space and the mold machining time.

**PRM-T SYSTEM** 系统用于模具加工时间短的项目时非常方便和高效。

### Main Features

- Flexible Air channel connection.
- Screw type design for the nozzle and nozzle locator.
- Gate size and the nozzle's length can be customized.

气路连接灵活  
主射嘴&热咀与分流板螺牙式连接固定  
可定制热咀长度和浇口大小

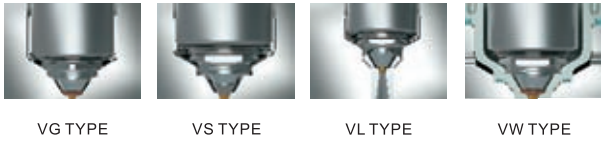
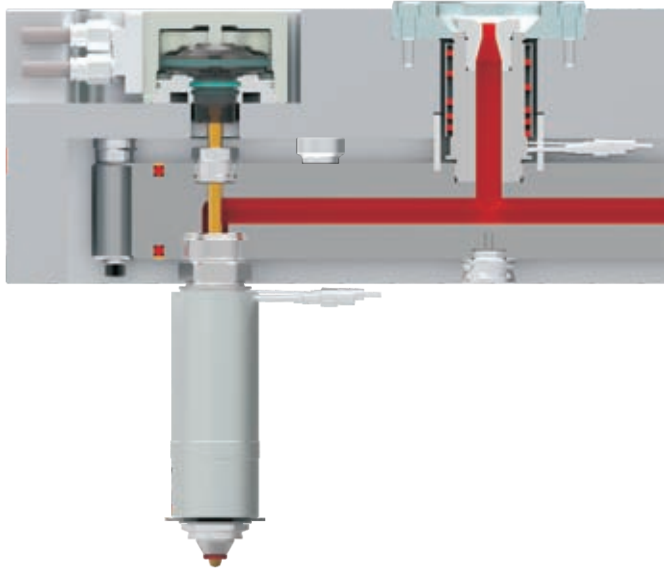
### Main Solutions

- Wide application for the home appliance.
- Shorten the mold machining lead time.
- Delivery with the whole hot runner unit pre-assembly.
- Convenient for the installation.

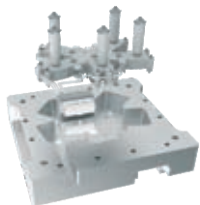
广泛应用于家电系列产品等  
缩短模具交期  
整体式热流道结构  
安装快捷方便



# PRM-T SYSTEM

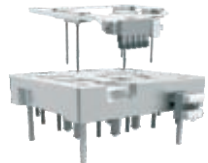


NOZZLE DIMENSIONS 热嘴尺寸			
Unit:mm			
MODEL	SIZE	CHANNEL DIA	GATE(VG,VS,VL,VW)
PRM-T	25	10	1.5/2.0/2.5
	35	12	2.5/3.0/4.0
	45	16/18	4.0/5.0/6.0/7.0



Pre-assemble the hot runner system. Put the whole unit into the clamping plate. Screw up the manifold and then connect the wire and connector.

将预先装配好的热流道系统装入面板中，锁紧分流板固定螺丝，连接电缆线并固定接线盒



Assemble the cylinder on the clamping plate. Connect the air pipe and solenoid valve,

将气缸安装在面板上，连接气管与电磁阀



Put the clamping plate onto the cavity plate, then screw it up tightly. Put and screw up the insulation plate.

将热流道系统装配好的面板安装在前模仁板上，锁紧面板螺丝。盖上并固定好隔热板。



完成装配

Finishing the installation.

