

S-SLIM SYSTEM



S-SLIM SYSTEM is the optimized design for the small multi-cavity application. The slim body design can be fitted into the small space on the mold.

S-SLIM SYSTEM 系统专门为小而多穴模具开发的, 瘦长的咀身设计能够适应小的模具空间。

Main Features

- Slim nozzle body design.
- The slim nozzle body allows the gate located on the deep inside of parts.
- Precise thermal control with the inserted heaters.
- Standard design for the application.

瘦长的咀身设计
咀身细小, 浇口可直接伸入产品凹处

嵌入式发热丝, 控温精确
标准化规格设计

Main Solutions

- Open system for the applications.
- Good performance for the small shot weight solution.
- Small gate size.
- Solution for the small packing parts.

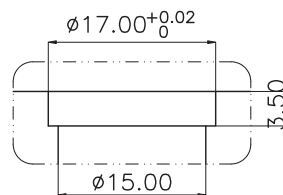
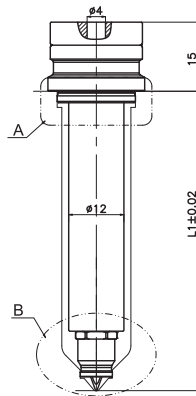
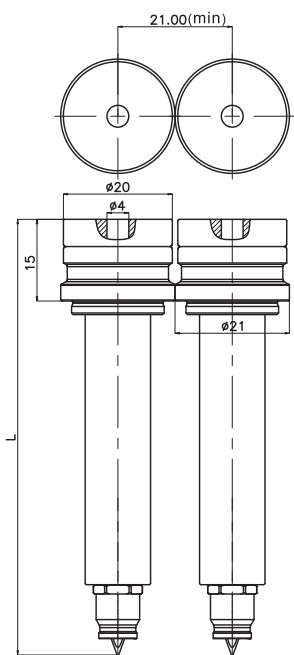
开放系统
小注塑量产品中表现突出
浇口微小
适用于小的包装类产品



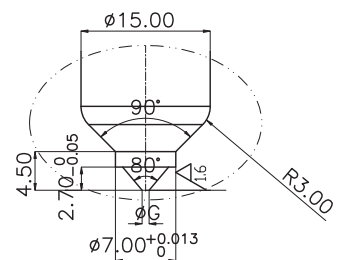
S-SLIM SYSTEM



NOZZLE DIMENSIONS 热嘴尺寸			Unit:mm
MODEL	L	L1(L-15)	ϕ G
S-SLIM12OP08000	80	65	0.8/1.0
S-SLIM12OP09000	90	75	0.8/1.0
S-SLIM12OP11000	110	95	0.8/1.0
S-SLIM12OP14000	140	125	0.8/1.0



DETAIL-A



DETAIL-B

