

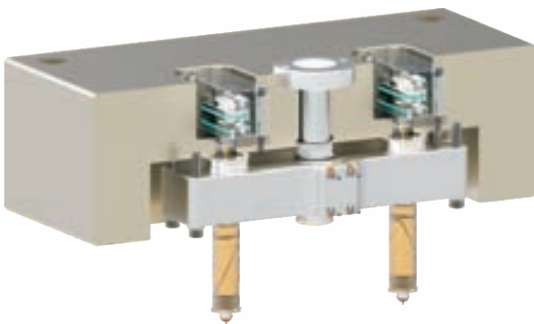
Mobile Phone
手机



为了适应市场发展需要，先锐以最快捷的速度为你提供全方位的手机类产品热流道设计、产品交期及全方位的售后服务，让客户在市场高速发展的社会引领潮流，达到互利双赢。

For the prompt mobile phone market development, SINO offers the punctual hot runner solutions and the service for the full range mobile phone plastic parts. It will assist the customers to lead the trend in the market. It achieves the mutual benefit and win-win to grow up between the customers and Sino.

PCH-T



- 热咀和分流板采用螺牙式固定
- 分流板直接锁在A板上, 整个系统加工精度易保证
- 整个热咀咀身一体式设计
- 气缸采用椭圆形气缸, 间距最小化
- 快速换色
- Screw type nozzle design
- Assemble the manifold in "A"plate directly, high machining precision
- One unit nozzle body design
- "U" type cylinder, minimize the nozzle pitch
- Prompt color changing

PCH



- 热咀一体式设计
- 采用铜套加热器, 换色效果优良
- 热咀抗磨损、耐腐蚀性能强
- One unit nozzle body design
- Applied the copper sleeve heater, good performance for the color changing
- High resistance with the wearing and corrosion resin



Mobile Phone
手机



Mobile phone frame
Material:PC+ABS
Weight:10G
Thickness:1.0mm
Nozzle type:PCH 18 CL



Mobile phone frame
Material:PC+ABS
Weight:14G
Thickness:1.0mm
Nozzle type:PRM 18 VC



Mobile phone back cover
Material:PC+ABS
Weight:10.5G
Thickness:1.0mm
Nozzle type:PRM 18 CL



Mobile phone panel
Material: PC+ABS
Weight:4.6G
Thickness:1.0mm
Nozzle type:PCH 18 VC



Mobile phone frame
Material:PC+ABS
Weight:9.5G
Thickness:1.0mm
Nozzle type:PRM 18 VC



Mobile phone back cover frame
Material:PC+ABS
Weight:10G
Thickness:1.0mm
Nozzle type:PRM 18 CL

