

PSM-FRAM SYSTEM



TV Frame(PC+15%GF)



Frame Stick(PC/ABS+15%GF)



Tablet pc Frame(PC+15%GF)



Bracket(PC+20%GF)



PSM-FRAM SYSTEM is the special design for the thin wall thickness and engineering resin with glass fiber. It is the right solution for the TV&Tablet pc middle frame solution.

PSM-FRAM SYSTEM 系统为薄壁产品和加玻纤的工程料而特别研发的热流道解决方案，广泛应用于电视机和平板电脑中框类产品。

Main Features

- Open nozzle(12), valve nozzle (18&25) for application.
- Standard gate bushing, quick replaceable.
- Wear resistance features design for GF filled resin.
- Special feature to extend the nozzle life.

开放（12）针阀（18&25）标准化热咀
浇口司标准化, 更换快速
针对玻纤胶料, 抗磨损性强
特殊结构, 延长了热嘴寿命

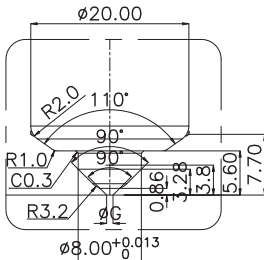
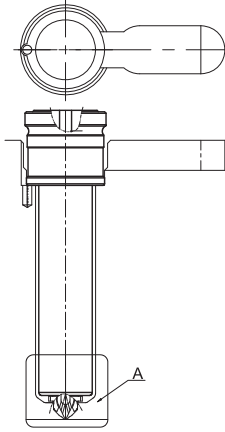
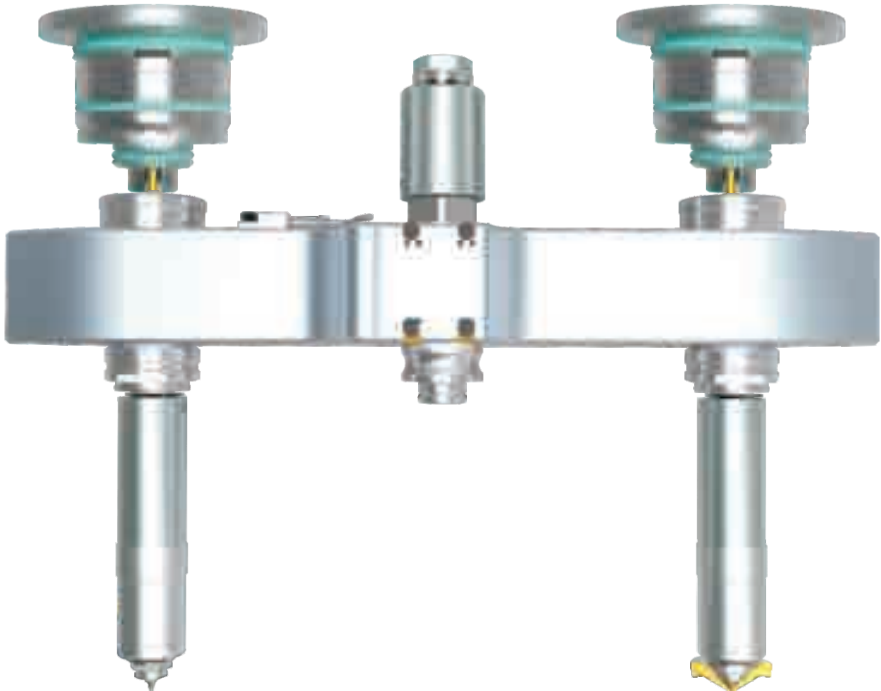
Main Solutions

- Valve and open system for the applications.
- Supper heat balance for the thin wall thickness application.
- Good performance for GF filled resin.
- Wide application on TV&Tablet pc middle frame solutions.

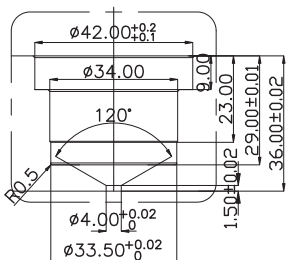
开放和针阀系统两种方案
优良的热量平衡性
玻纤胶料填充表现优异
广泛应用于电视机和平板电脑中框



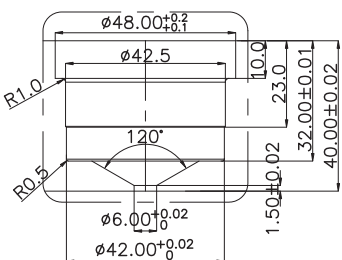
PSM-FRAM SYSTEM



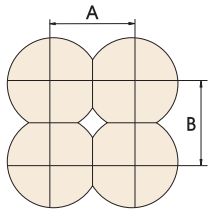
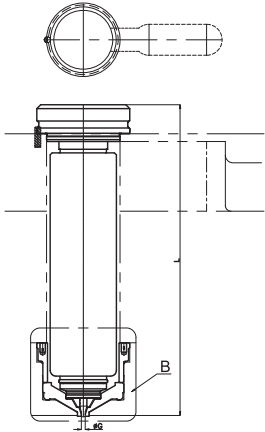
DETAIL-A
PSM12(open)



DETAIL-B
PSM18



DETAIL-B
PSM25



Rectangle Space Between

MODEL	Gate minimum space		
	Between N/L & Nozzle	Between Nozzles	
		A	B
PSM12(open)	28	28	28
PSM18	86	84	84
PSM25	86	84	84

